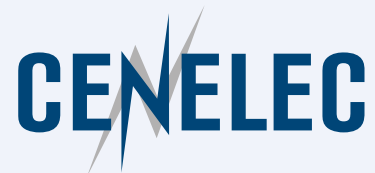


CoC amendment proposal

Mente Konsman



Joint proposal



CLC/TC 205/WG 18 - Smart grids



Concept comparison between SPINE and S2

SPINE Use Cases (EN50631)

- Flexible start for White Goods ✓
- Monitoring of Power Consumption ✓
- Limitation of Power Consumption ✓
- Limitation of Power Production* ✓
- Incentive Table based Power Consumption Management
- Optimization of Self Consumption
- Flexible Load/Heating Rod
- Monitoring and Control of SGR conditions
- HVAC Temperature Package
- HVAC System Function Package

S2 Control Types (EN50491-12-2)

- Power Envelope Based Control ✓
- Power Profile Based Control ✓
- Operation Mode Based Control*
- Fill Rate Based Control
- Demand Driven Based Control
- Measurements (generic feature) ✓
- Forecasts (generic feature)

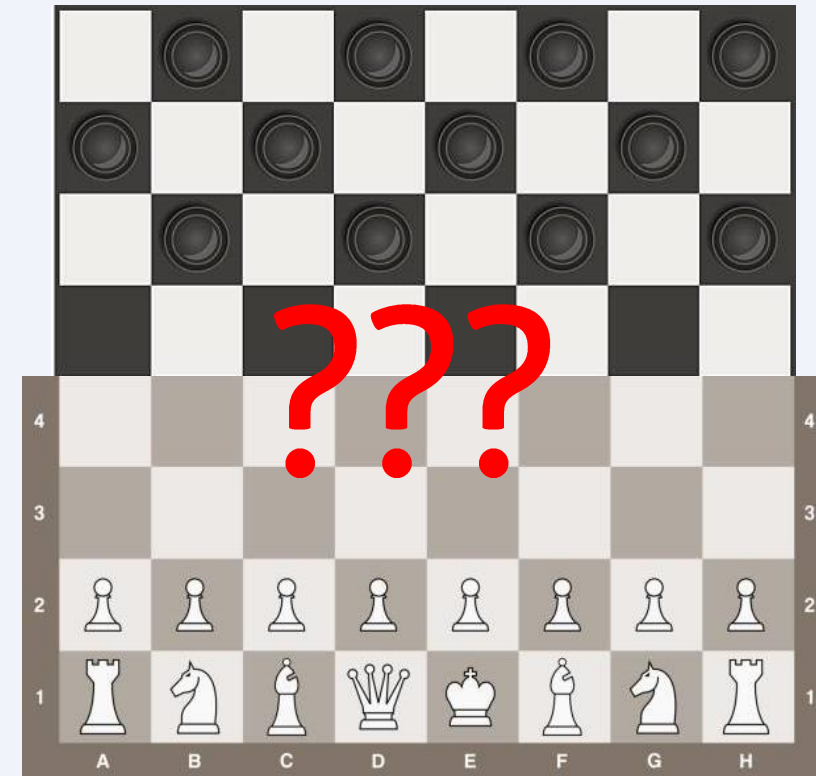
* Greyed out concepts are not part of the CoC

✓ Concepts that are compatible between SPINE and S2

Can SAREF4ENER help out?

- SPINE was already fully mapped to SAREF4ENER
- S2 has been fully mapped to SAREF4ENER within InterConnect
- Dutch Interconnect pilot/demo combines SPINE enabled whitegoods and an S2 based energy management system (ReFlex)
 - Is only interoperable because it is limited to compatible concepts from both SPINE and S2
 - Interoperability breaks when incompatible concepts are introduced
 - E.g. a heat pump that is managed with an incentive table
- Analogy: a boardgame ontology
 - Both checkers and chess can be mapped/described in the boardgame ontology
 - Yet, you cannot play a meaningful game where one player plays chess and the other checkers → the ontology by itself does not create interoperability

→ *You need to select an interoperable subset (common denominator)*



Our proposal

- Remove the Incentive Table from the CoC
- Rationale:
 - The incentive table conflicts with other approaches, and hence jeopardizes the interoperability among different protocols that the CoC is striving for
 - The different approaches with regard to the incentive table cannot be bridged by SAREF4ENER, even though both EN50631 and EN50491-12-2 have a full SAREF4ENER mapping
 - Unclear separation of responsibilities between devices and EMS
 - To ensure interoperability we must make sure that the CoC underlines the common denominator of different protocols, not the differences
 - Start small and build from there
 - Easy to implement in CoC text